

POMPE A MANO PM
(PM HAND PUMPS)

CATALOGO TECNICO
(TECHNICAL CATALOGUE)

Via Provinciale Est 12/N 40053 Bazzano (BO) ITALIA
TEL: +39 051 832459 FAX: +39 051 835375
www.hvhydraulic.com info@hvhydraulic.com

Catalogo stampato in Italia il 05/01/2005
6° edizione
Tutti i diritti sono riservati
Questa edizione annulla e sostituisce tutte le precedenti

*Catalogue printed in Italy 05/01/2005
6° edition
All rights are reserved
Present edition replaces any previous edition*

INDICE (INDEX)

Descrizione ed utilizzo delle pompe (<i>Description and utility of pump</i>)		pag. 1
Descrizione sigla (<i>Initials description</i>)		pag. 2
POMPA (PUMP) PM :		
PM 12-25-45	con volantino di scarico <i>with release handknob</i>	pag. 3
PM 12-25-45 s	con volantino di scarico, con soffiutto <i>with release handknob, with bellows</i>	pag. 3
PM 12-25-45 byB	con valvola di by-pass (destra) <i>with pressure relief valve (right)</i>	pag. 4
PM 12-25-45 byB-s	con valvola di by-pass (destra), con soffiutto <i>with pressure relief valve (right), with bellows</i>	pag. 4
PM 12-25-45 e	senza volantino di scarico <i>without release handknob</i>	pag. 5
PM 12-25-45 e-s	senza volantino di scarico, con soffiutto <i>without release handknob, with bellows</i>	pag. 5
PM 12-25-45 byB-e	senza volantino di scarico, con valvola di by-pass (destra) <i>without release handknob, with pressure relief valve (right)</i>	pag. 6
PM 12-25-45 byB-e-s	senza volantino di scarico, con valvola di by-pass (destra), con soffiutto <i>without release handknob, with pressure relief valve (right), with bellows</i>	pag. 6
PM 12-25-45 m	con manipolatore <i>with release manipulator</i>	pag. 7
PM 12-25-45 m-s	con manipolatore, con soffiutto <i>with release manipulator, with bellows</i>	pag. 7
PM 12-25-45 byB-m	con valvola di by-pass (destra), con manipolatore <i>with pressure relief valve (right), with release manipulator</i>	pag. 8
PM 12-25-45 byB-m-s	con valvola di by-pass (destra), con manipolatore, con soffiutto <i>with pressure relief valve (right), with release manipulator, with bellows</i>	pag. 8
PM 12-25-45 L	con leva di scarico <i>with release lever</i>	pag. 9
PM 12-25-45 L-s	con leva di scarico, con soffiutto <i>with release lever, with bellows</i>	pag. 9
PM 12-25-45 byB-L	con valvola di by-pass (destra), con leva di scarico <i>with pressure relief valve (right), with release lever</i>	pag. 10
PM 12-25-45 byB-L-s	con valvola di by-pass (destra), con leva di scarico, con soffiutto <i>with pressure relief valve (right), with release lever, with bellows</i>	pag. 10

DESCRIZIONE ED UTILIZZO DELLE POMPE

Le pompe a mano **HV HYDRAULIC** sono studiate appositamente per elevate prestazioni ed elevata affidabilità. Il loro impiego è molteplice nei più svariati settori quali: trasporti, industria ed agricoltura. Possono essere installate sia in posizione orizzontale che verticale.

CONDIZIONI DI IMPIEGO:

- OLIO

Utilizzare solo olio idraulico a base minerale ISO 6743/4 (DIN 51524)

- VISCOSITA'

Secondo i parametri ISO 3448 (DIN 51519)

Minima: ISO VG 15

Massima: ISO VG 100

Consigliata: ISO VG 46

- TEMPERATURA

Esercizio: da -20° C a +80° C

- FILTRAZIONE CONTAMINAZIONE

Filtrazione consigliata: 50-80 micron

Classe di contaminazione: 18/14 ISO 4406 (9 NAS 1638)

(DESCRIPTION AND UTILITY OF PUMPS)

HV HYDRAULIC 'S hand pumps have specially been studied expressly for high performance and high reliability. They are used in different sectors: transport, industry and agriculture. Can be installed both in horizontal and vertical position.

DIRECTION FOR USE:

- OIL

Use only ISO 6743/4 (DIN 51524) hydraulic mineral oil

- VISCOSITY

The viscosity must be according to ISO 3448 (DIN 51519) standards

Minimum: ISO VG 15

Maximum: ISO VG 100

Advised: ISO VG 46

- TEMPERATURE

Working temperature from -20° C to +80° C

- FILTRATION CONTAMINATION

Advised filtration: 50-80 micron

Contamination class: 18/14 ISO 4406 (9 NAS 1638)

DESCRIZIONE SIGLA (INITIALS DESCRIPTION)

PM = Pompa a mano doppio effetto per cilindro a semplice effetto. Fissaggio flangiato su serbatoio.
Double - acting pump for single - acting cylinder. Flanged fixing on oil tank.

12-25-45 = Cilindrate cm^3 (*Flow cm^3*)

s = Soffietto (*bellows*)

e = Senza volantino di scarico (*without release handknob*)

byB = Valvola di by-pass destra (*right pressure relief valve*)

m = Manipolatore (*manipulator*)

L = Leva di scarico (*release lever*)

Pompa doppio effetto per cilindro a semplice effetto per montaggio su serbatoio

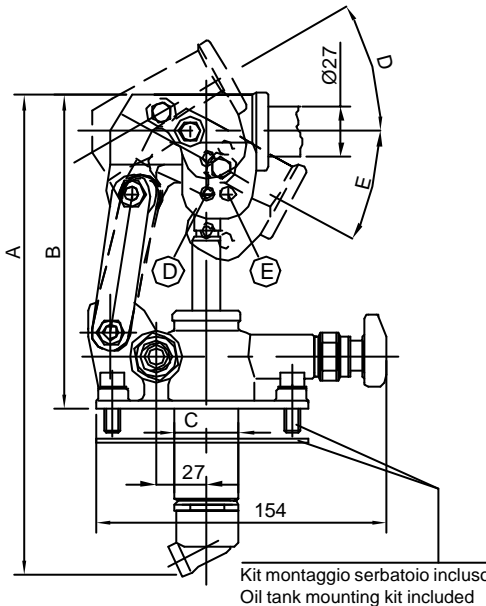
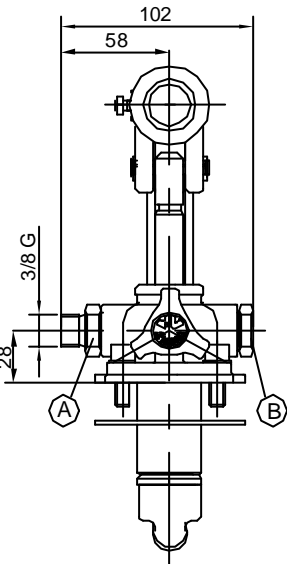
Double-acting pump for single-acting cylinder for assembly on tank

Tipo di pompa Type of pump	Cilindr.(cm ³) Flow (cm ³)	Pressione (Pressure) (bar)		Massa (Kg) Weight (Kg)	Codice senza soffiet. Code without bellows	Codice con soffiet. Code with bellows
		eserciz.(exerciz.)	max.			
PM 12	12,095	320	380	2,90	60500000	60500027
PM 25	25,280	280	350	2,95	60510000	60510027
PM 45	44,532	220	280	3,00	60520000	60520027

**TABELLA DIMENSIONI
SIZE TABLE**

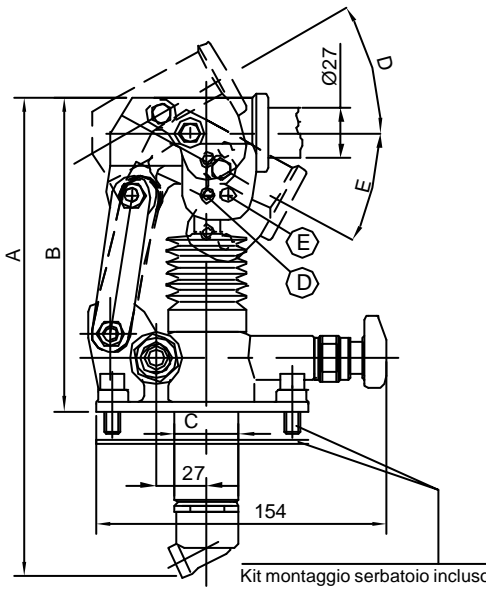
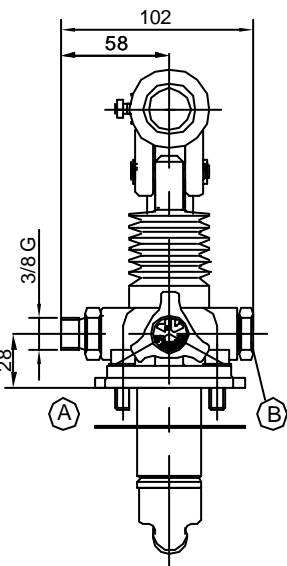
Tipo di pompa Type of pump	A (mm)	B (mm)	C (mm)	D (°)	E (°)
PM 12	253	166	34	26	31
PM 25	273	172	34	30	30
PM 45	283	172	40	45	33

PM 12/25/45

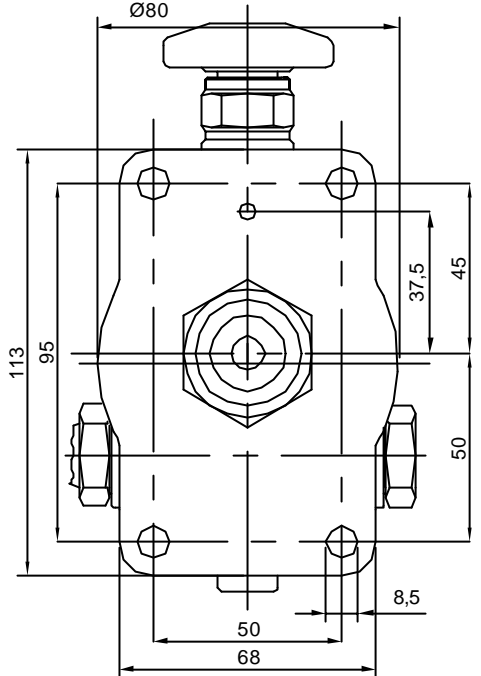


Kit montaggio serbatoio incluso
Oil tank mounting kit included

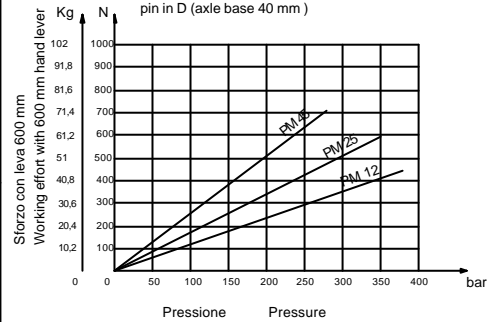
PM 12/25/45 s



Kit montaggio serbatoio incluso
Oil tank mounting kit included

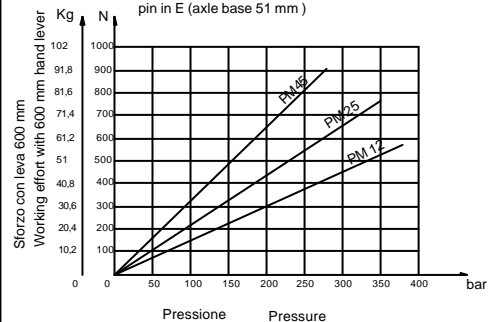


**DIAGRAMMA DI CARICO
con spina in D (interasse 40 mm)
LOAD CURVE
pin in D (axle base 40 mm)**



Interassi consigliati: PM 12 40 mm (D)
Axle base advised: PM 25 51 mm (E)
PM 45 51 mm (E)

**DIAGRAMMA DI CARICO
con spina in E (interasse 51 mm)
LOAD CURVE
pin in E (axle base 51 mm)**





Pompe a mano e componenti idraulici
Hand pumps and hydraulic components

POMPA A MANO PM 12-25-45
con volantino di scarico e valvola di by-pass

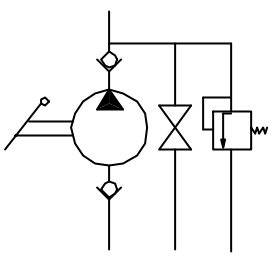
Pompa doppio effetto per cilindro a semplice effetto per montaggio su serbatoio

HAND PUMP PM 12-25-45
with exhaust handwheel and pressure relief valve

Double-acting pump for single-acting cylinder for assembly on tank

Tipo di pompa Type of pump	Cilindr.(cm ³) Flow (cm ³)	Pressione (Pressure) (bar)		Massa (Kg) Weight (Kg)	Codice senza soffiet. Code without bellows	Codice con soffiet. Code with bellows
		eserciz.(exerciz.)	max.			
PM 12	12,095	320	380	2,90	60500001	60500028
PM 25	25,280	280	350	2,95	60510001	60510028
PM 45	44,532	220	280	3,00	60520001	60520028

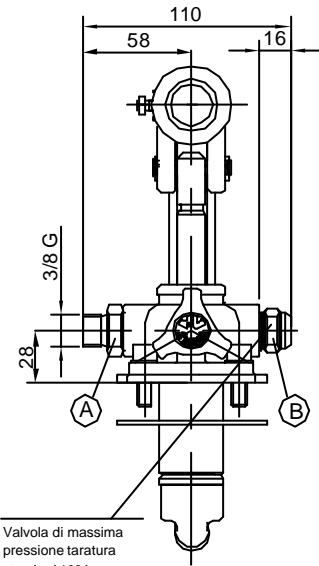
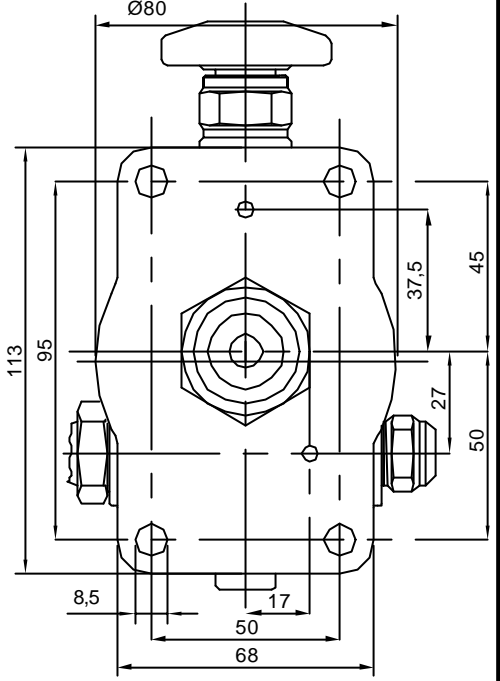
HV Hydraulic s.a.s. reserve the right to apply modifications in every moment and notice. The engineering data are approximate and not binding. HV Hydraulic s.a.s. si riserva il diritto di applicare modifiche in qualsiasi momento e senza preavviso. I dati tecnici sono indicativi e non impegnativi.



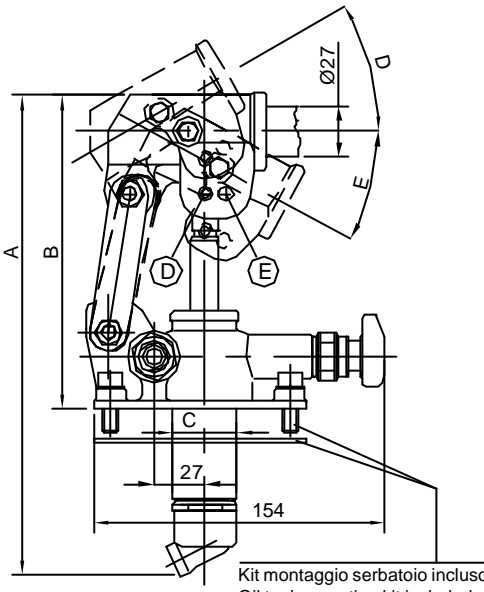
**TABELLA DIMENSIONI
SIZE TABLE**

Tipo di pompa Type of pump	A (mm)	B (mm)	C (mm)	D (°)	E (°)
PM 12	253	166	34	26	31
PM 25	273	172	34	30	30
PM 45	283	172	40	45	33

PM 12/25/45 byB



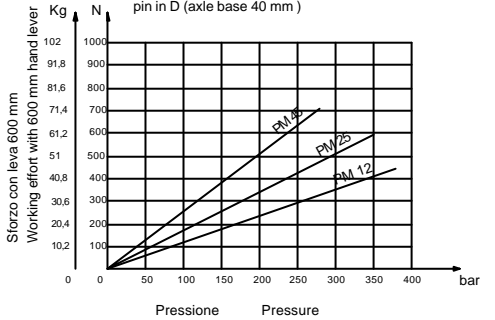
Valvola di massima pressione taratura standard 100 bar
(Pressure relief valve standard setting 100 bar)



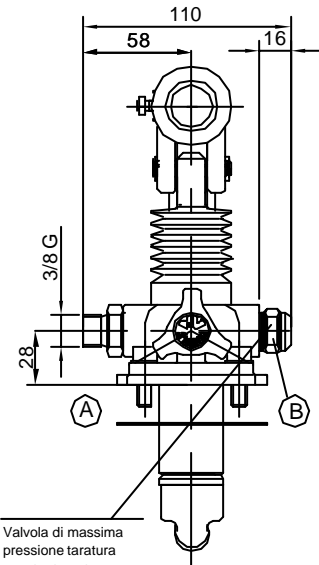
Kit montaggio serbatoio incluso
Oil tank mounting kit included

PM 12/25/45 byB-s

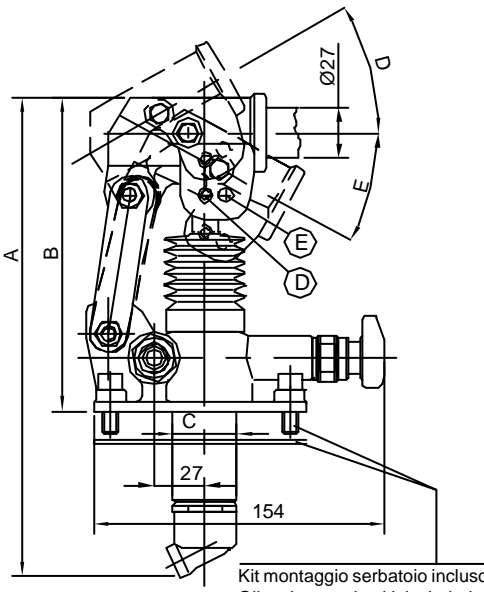
**DIAGRAMMA DI CARICO
con spina in D (interasse 40 mm)
LOAD CURVE
pin in D (axle base 40 mm)**



Interassi consigliati: PM 12 40 mm (D)
Axle base advised: PM 25 51 mm (E)
PM 45 51 mm (E)

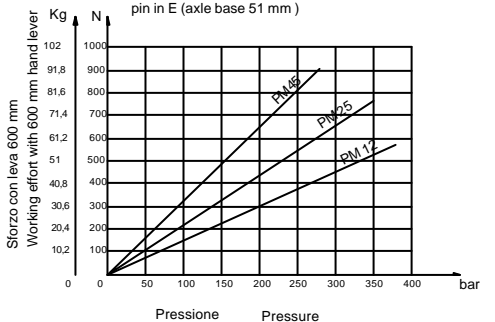


Valvola di massima pressione taratura standard 100 bar
(Pressure relief valve standard setting 100 bar)



Kit montaggio serbatoio incluso
Oil tank mounting kit included

**DIAGRAMMA DI CARICO
con spina in E (interasse 51 mm)
LOAD CURVE
pin in E (axle base 51 mm)**





Pompe a mano e componenti idraulici
Hand pumps and hydraulic components

POMPA A MANO PM 12-25-45
senza volantino di scarico

Pompa doppio effetto per cilindro a semplice effetto per montaggio su serbatoio

HAND PUMP PM 12-25-45
without exhaust wheel

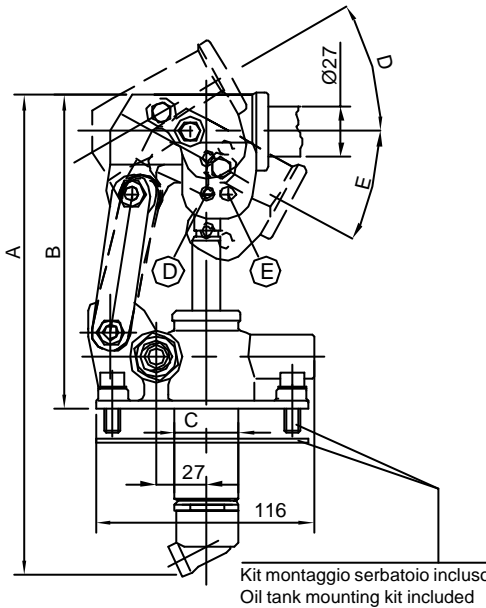
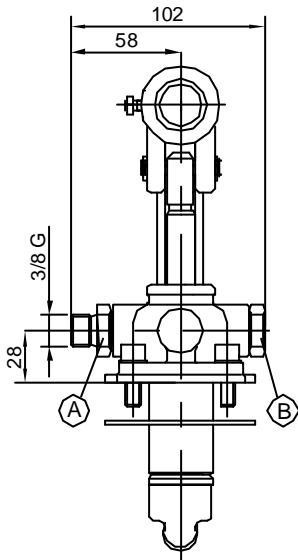
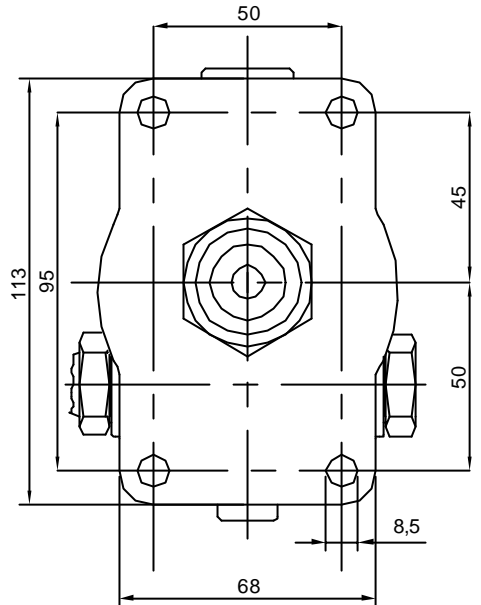
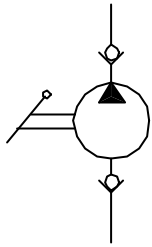
Double-acting pump for single-acting cylinder for assembly on tank

Tipo di pompa Type of pump	Cilindr.(cm ³) Flow (cm ³)	Pressione (Pressure) (bar)		Massa (Kg) Weight (Kg)	Codice senza soffiet. Code without bellows	Codice con soffiet. Code with bellows
		eserciz.(exerciz.)	max.			
PM 12	12,095	320	380	2,90	60500002	60500029
PM 25	25,280	280	350	2,95	60510002	60510029
PM 45	44,532	220	280	3,00	60520002	60520029

TABELLA DIMENSIONI
SIZE TABLE

Tipo di pompa Type of pump	A (mm)	B (mm)	C (mm)	D (°)	E (°)
PM 12	253	166	34	26	31
PM 25	273	172	34	30	30
PM 45	283	172	40	45	33

PM 12/25/45 e



PM 12/25/45 e-s

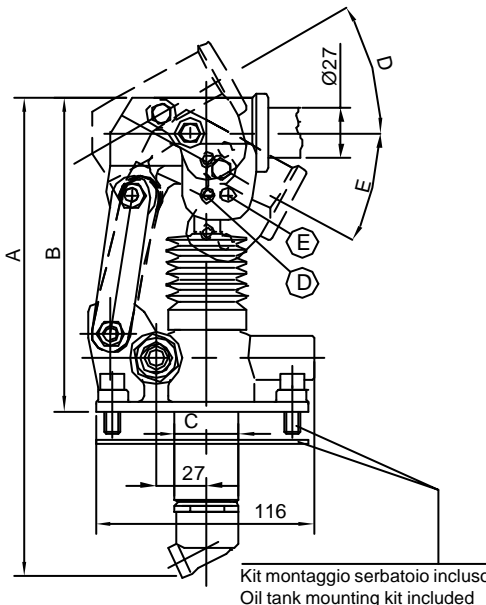
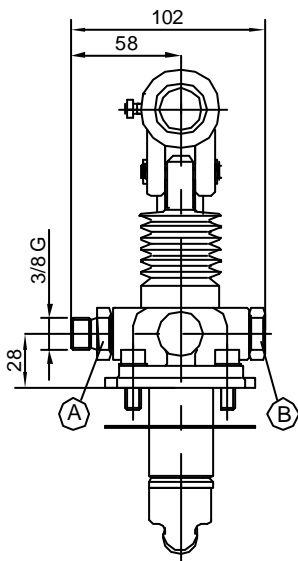
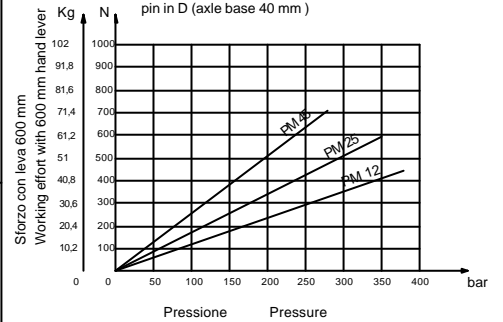


DIAGRAMMA DI CARICO
con spina in D (interasse 40 mm)

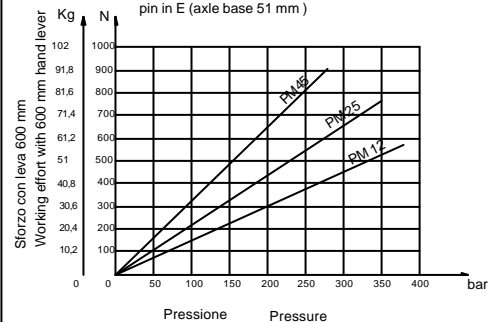
LOAD CURVE
pin in D (axle base 40 mm)



Interassi consigliati: PM 12 40 mm (D)
Axle base advised: PM 25 51 mm (E)
PM 45 51 mm (E)

DIAGRAMMA DI CARICO
con spina in E (interasse 51 mm)

LOAD CURVE
pin in E (axle base 51 mm)



HV Hydraulic s.a.s. reserve the right to apply modifications in every moment and notice. The engineering data are approximate and not binding. HV Hydraulic s.a.s. si riserva il diritto di applicare modifiche in qualsiasi momento e senza preavviso. I dati tecnici sono indicativi e non impegnativi.



Pompe a mano e componenti idraulici
Hand pumps and hydraulic components

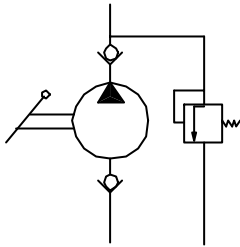
POMPA A MANO PM 12-25-45
senza volantino di scarico con valvola di by-pass

Pompa doppio effetto per cilindro a semplice effetto per montaggio su serbatoio

HAND PUMP PM 12-25-45
without exhaust wheel with pressure relief valve

Double-acting pump for single-acting cylinder for assembly on tank

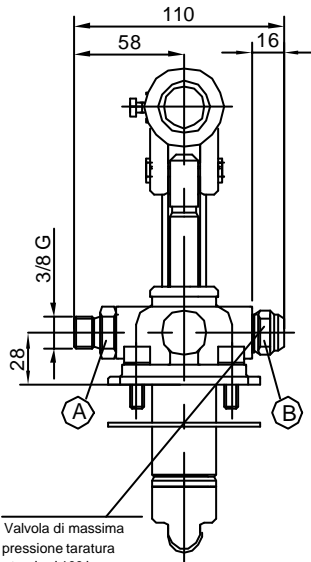
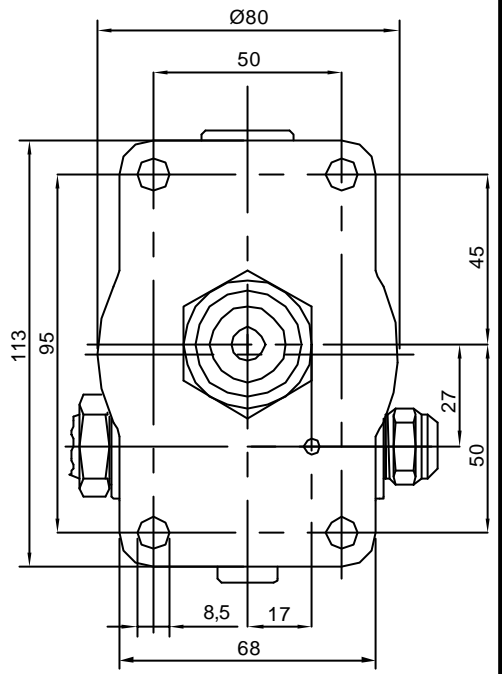
Tipo di pompa Type of pump	Cilindr.(cm ³) Flow (cm ³)	Pressione (Pressure) (bar)		Massa (Kg) Weight (Kg)	Codice senza soffieta. Code without bellows	Codice con soffieta. Code with bellows
		eserciz.(exerciz.)	max.			
PM 12	12,095	320	380	2,90	60500003	60500030
PM 25	25,280	280	350	2,95	60510003	60510030
PM 45	44,532	220	280	3,00	60520003	60520030



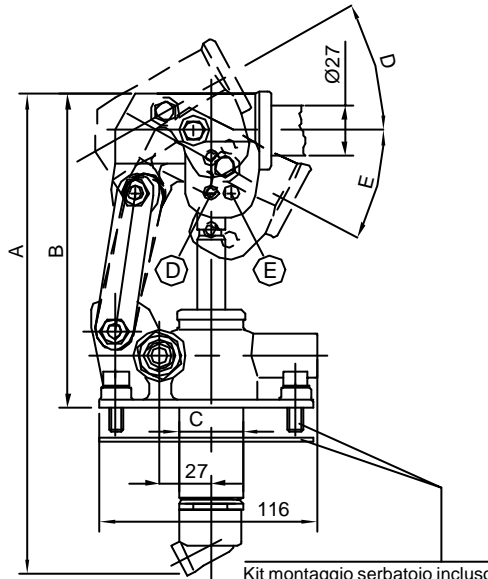
**TABELLA DIMENSIONI
SIZE TABLE**

Tipo di pompa Type of pump	A (mm)	B (mm)	C (mm)	D (°)	E (°)
PM 12	253	166	34	26	31
PM 25	273	172	34	30	30
PM 45	283	172	40	45	33

PM 12/25/45 byB-e



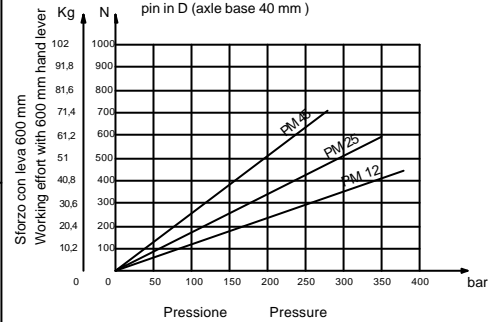
Valvola di massima pressione taratura standard 100 bar
(Pressure relief valve standard setting 100 bar)



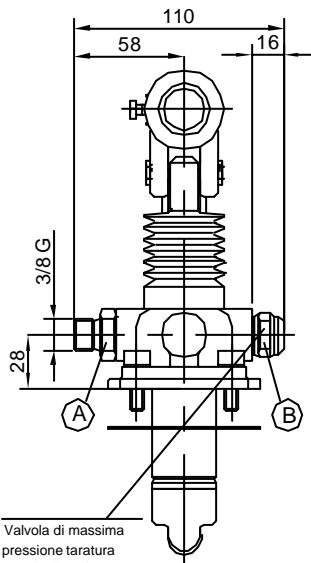
Kit montaggio serbatoio incluso
Oil tank mounting kit included

PM 12/25/45 byB-e-s

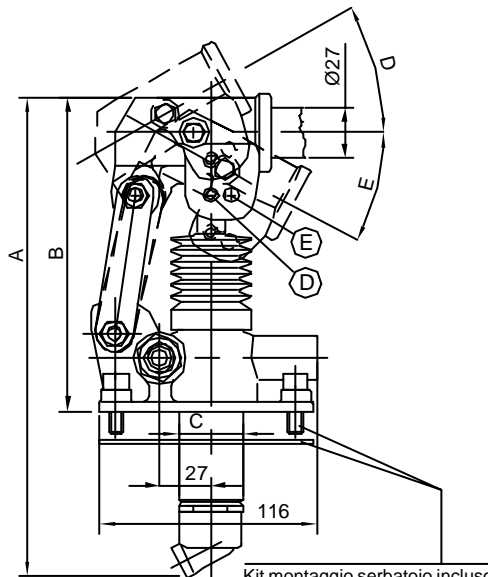
**DIAGRAMMA DI CARICO
con spina in D (interasse 40 mm)
LOAD CURVE
pin in D (axle base 40 mm)**



Interassi consigliati: PM 12 40 mm (D)
Axle base advised: PM 25 51 mm (E)
PM 45 51 mm (E)



Valvola di massima pressione taratura standard 100 bar
(Pressure relief valve standard setting 100 bar)



Kit montaggio serbatoio incluso
Oil tank mounting kit included

**DIAGRAMMA DI CARICO
con spina in E (interasse 51 mm)
LOAD CURVE
pin in E (axle base 51 mm)**

